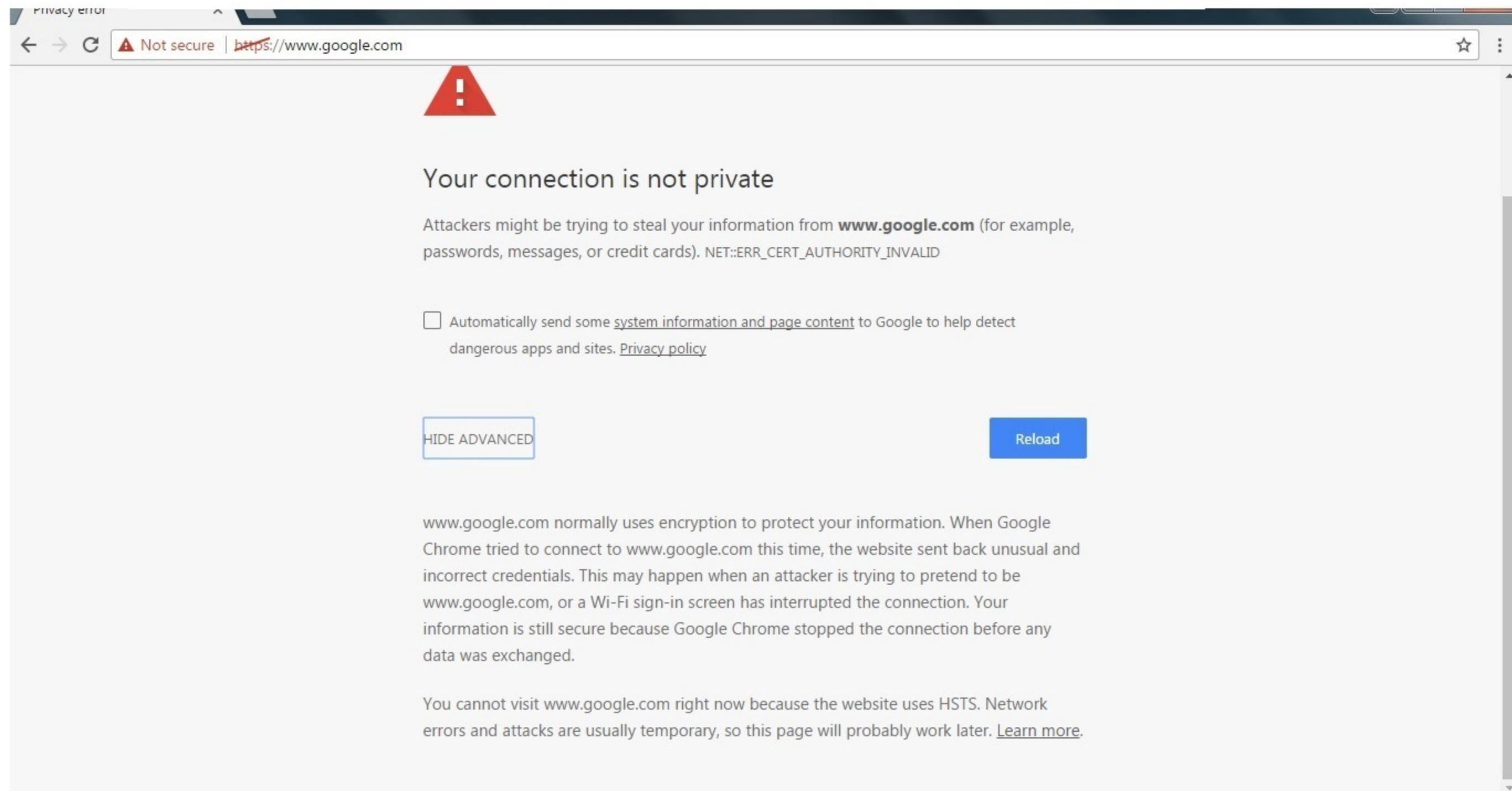


If you see the following screen go to bit.ly/nsdfilter to download the Securlly SSL Certificate. See following page for instructions.



The image shows a browser window with a privacy error. The address bar shows "Not secure" and "https://www.google.com". The main content area features a red warning triangle icon, the heading "Your connection is not private", and a paragraph explaining that attackers might steal information. Below this is a checkbox for sending system information to Google. At the bottom, there are "HIDE ADVANCED" and "Reload" buttons, followed by a detailed explanation of the error and a "Learn more" link.

Privacy error

Not secure | <https://www.google.com>

Your connection is not private

Attackers might be trying to steal your information from **www.google.com** (for example, passwords, messages, or credit cards). NET::ERR_CERT_AUTHORITY_INVALID

Automatically send some [system information and page content](#) to Google to help detect dangerous apps and sites. [Privacy policy](#)

[HIDE ADVANCED](#) [Reload](#)

www.google.com normally uses encryption to protect your information. When Google Chrome tried to connect to www.google.com this time, the website sent back unusual and incorrect credentials. This may happen when an attacker is trying to pretend to be www.google.com, or a Wi-Fi sign-in screen has interrupted the connection. Your information is still secure because Google Chrome stopped the connection before any data was exchanged.

You cannot visit www.google.com right now because the website uses HSTS. Network errors and attacks are usually temporary, so this page will probably work later. [Learn more](#).

Step 1 Goto Bit.ly/nsdfilter

Step 2 click on Download Securly windows

Step 3 in the lower left corner click on the Securly SSL Window..exe pop up (If you don't see this prompt go to the next page)

Step 4 Click run, allow, or yes to any prompts

Select Language | Username | Password | Login | Search Term | Search

NATIONAL SCHOOL DISTRICT
Creating Successful Learners Since 1871

Home | District Info | Our Schools | Student Programs | Departments | For Parents/Students | For Staff

Tech Support & Training

NSD > Departments > Technology > Tech Support & Training

Technology Support & Training

SECURLY SSL CERTIFICATES

Download Securly Certificate - Windows 2

Download Securly Certificate - MAC

Instructions for downloading Securly Certificate on IOS device

Instructions for downloading Securly Certificate on Android Device

GroupWise Help

Nsdus Website Help

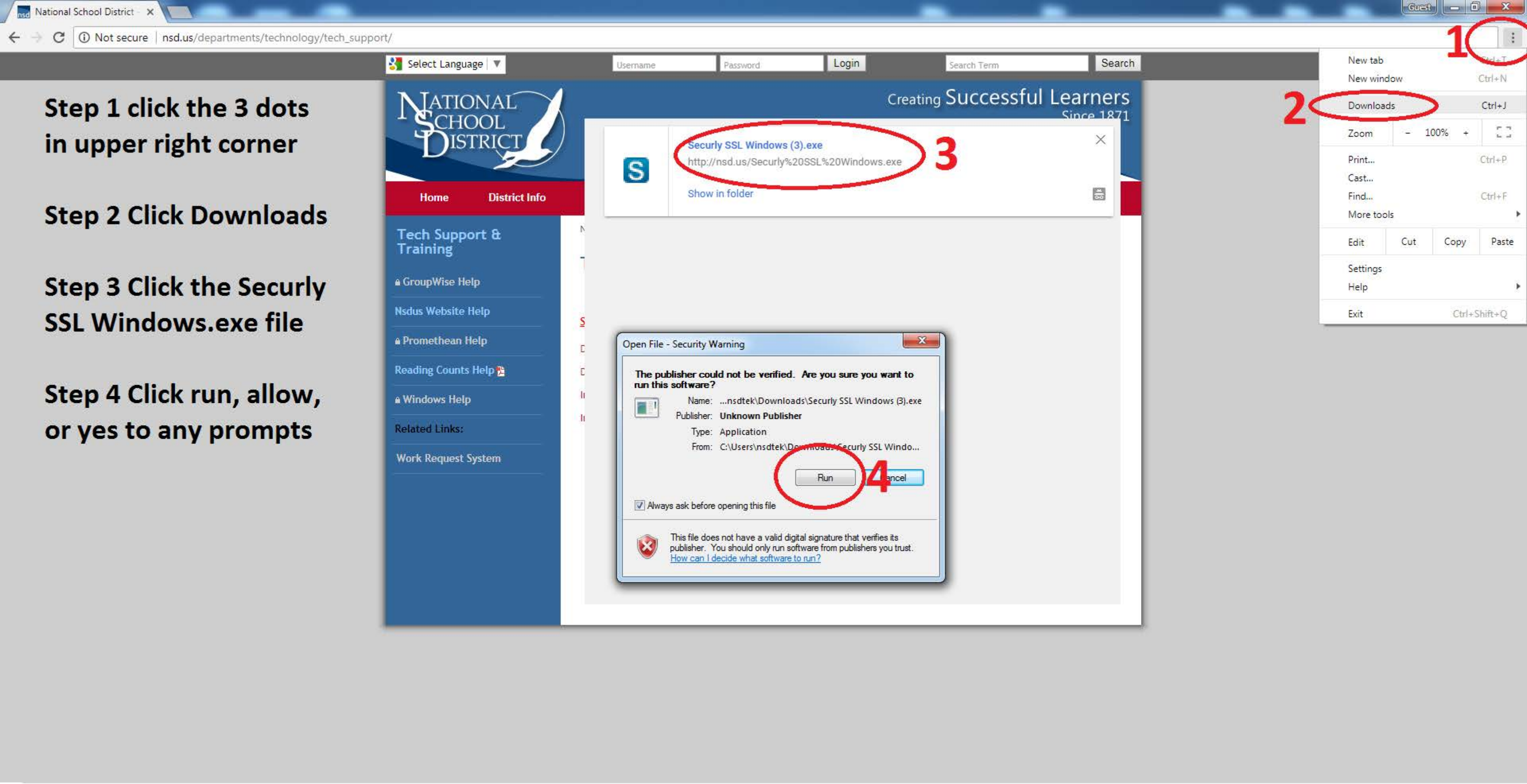
Promethean Help

Reading Counts Help

Windows Help

Related Links:

Work Request System



Step 1 click the 3 dots in upper right corner

Step 2 Click Downloads

Step 3 Click the Securly SSL Windows.exe file

Step 4 Click run, allow, or yes to any prompts

1

2

3

4